



DAYLIGHT LUMINAIRES

DECORATIVE DAYLIGHT LUMINAIRES ORNAMENT SERIES



Description:

Series of surface mounted and recessed luminaires for modular ceilings type Armstrong, Grilyato and plasterboard suspended ceilings.

Technical details:

Metal housing is painted with powder paint. Diffuser made of PMMA or from light-stabilized polystyrene.

Luminaires are equipped with LED strip type SMD 5000K 48W.

The luminaires are available in black and white housings.

Size of luminaires:

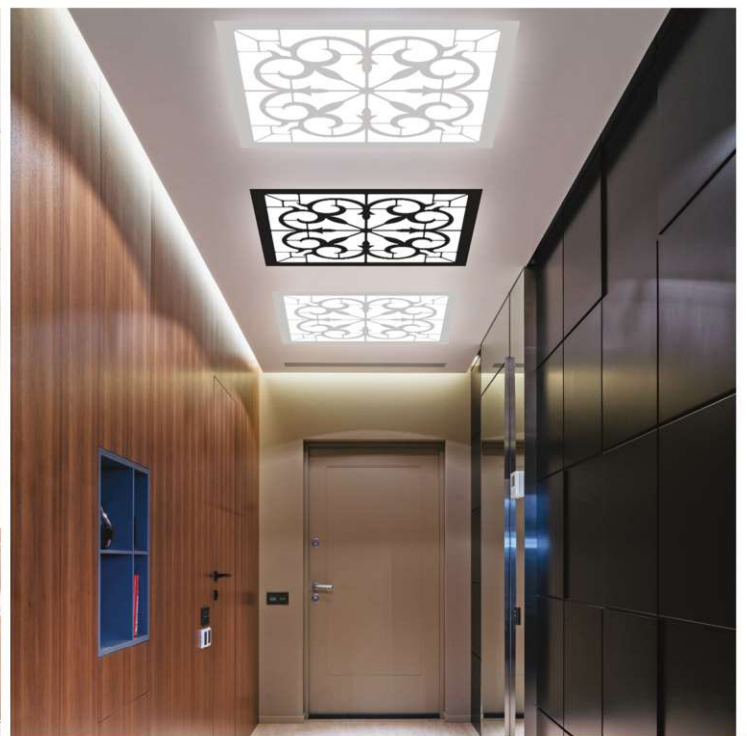
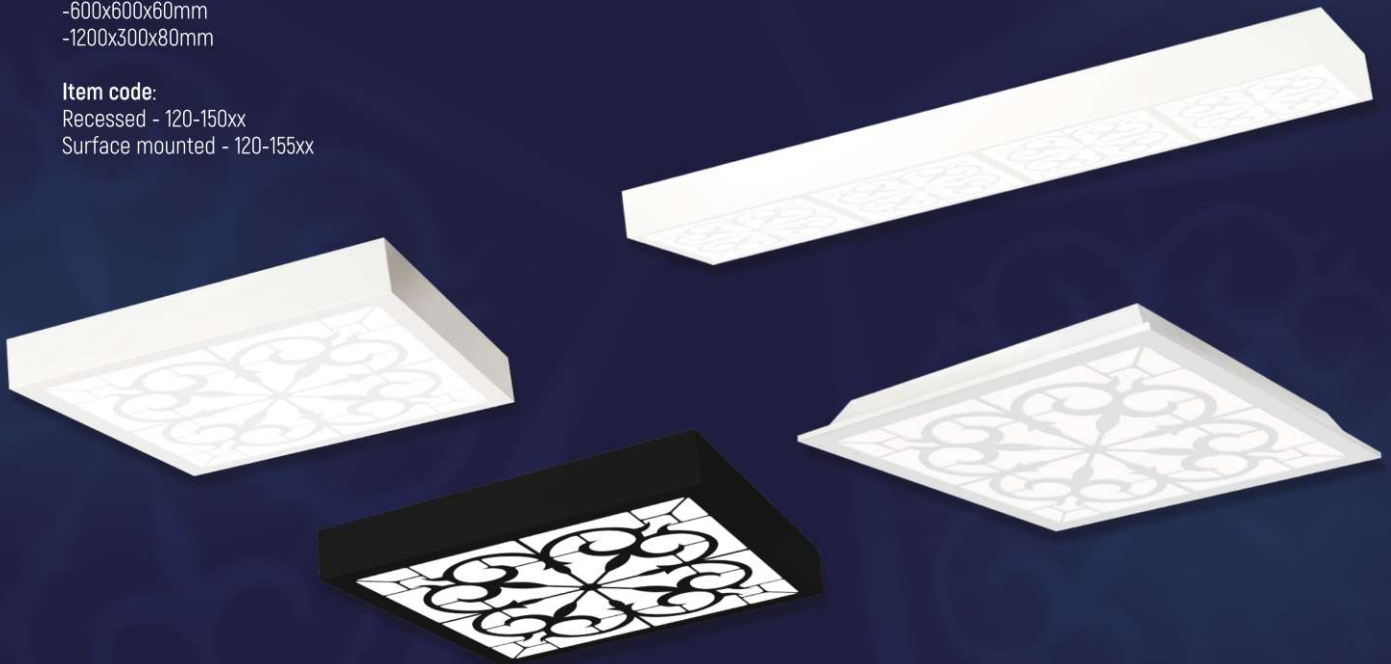
-600x600x60mm

-1200x300x80mm

Item code:

Recessed - 120-150xx

Surface mounted - 120-155xx



DECORATIVE DAYLIGHT LUMINAIRES SERIES NAURYZ



Description:

Series of surface mounted and recessed luminaires for modular ceilings type Armstrong, Grilyato and plasterboard suspended ceilings.

Technical details:

Metal housing is painted with powder paint. Diffuser made of PMMA or from light-stabilized polystyrene.

Luminaires are equipped with LED strip type SMD 3000K/4500K/5700K 48W.

The luminaires are available in black and white housings.

Size of luminaires:

-600x600x60mm

Item code:

Recessed - 120-150xx

Surface mounted - 120-155xx



DECORATIVE DAYLIGHT LUMINAIRES SERIES VITRAGE



Description:

Series of surface mounted and recessed luminaires for modular ceilings type Armstrong, Grilyato and plasterboard suspended ceilings.

Technical details:

Metal housing is painted with powder paint. Diffuser made of PMMA or from light-stabilized polystyrene.

Luminaires are equipped with LED strip type SMD 3000K/4500K/5700K 48W.

The luminaires are available in black and white housings.

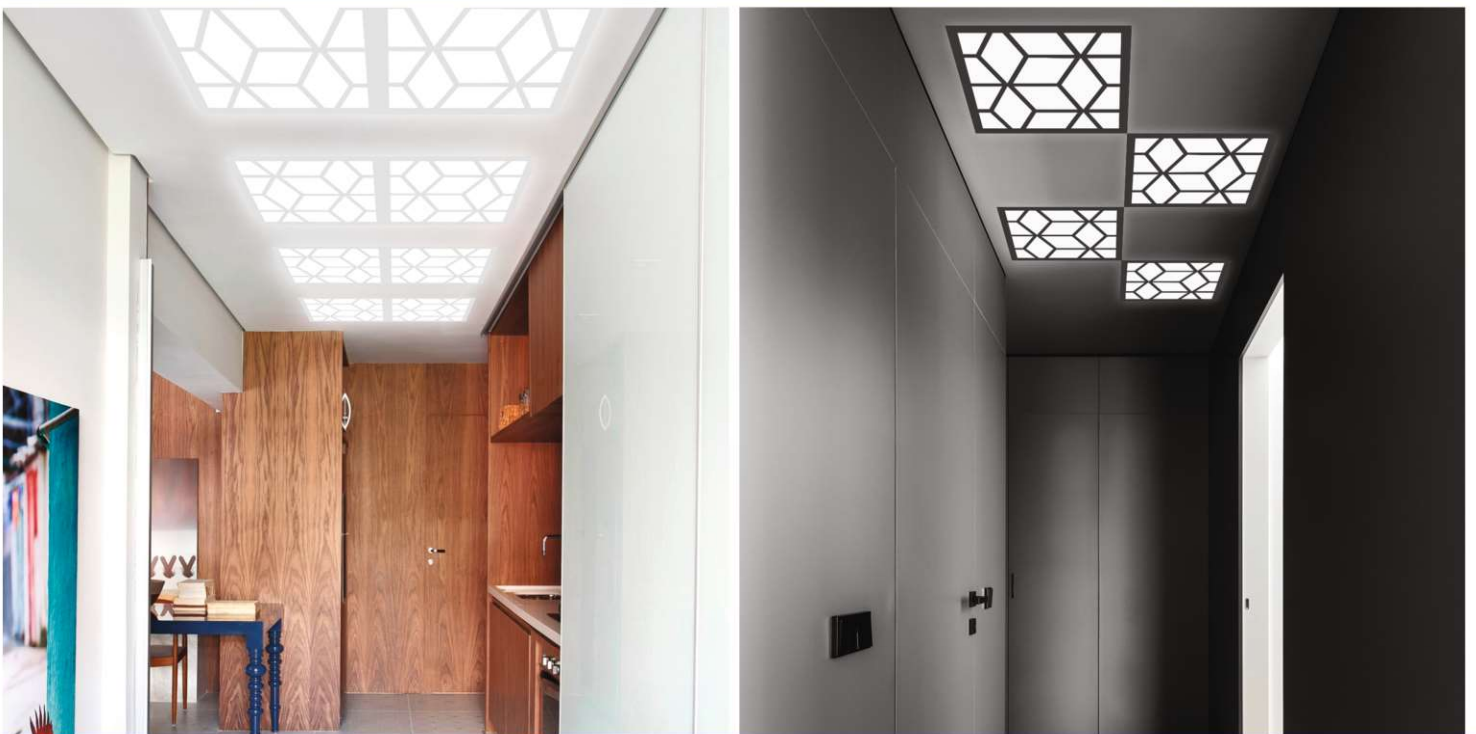
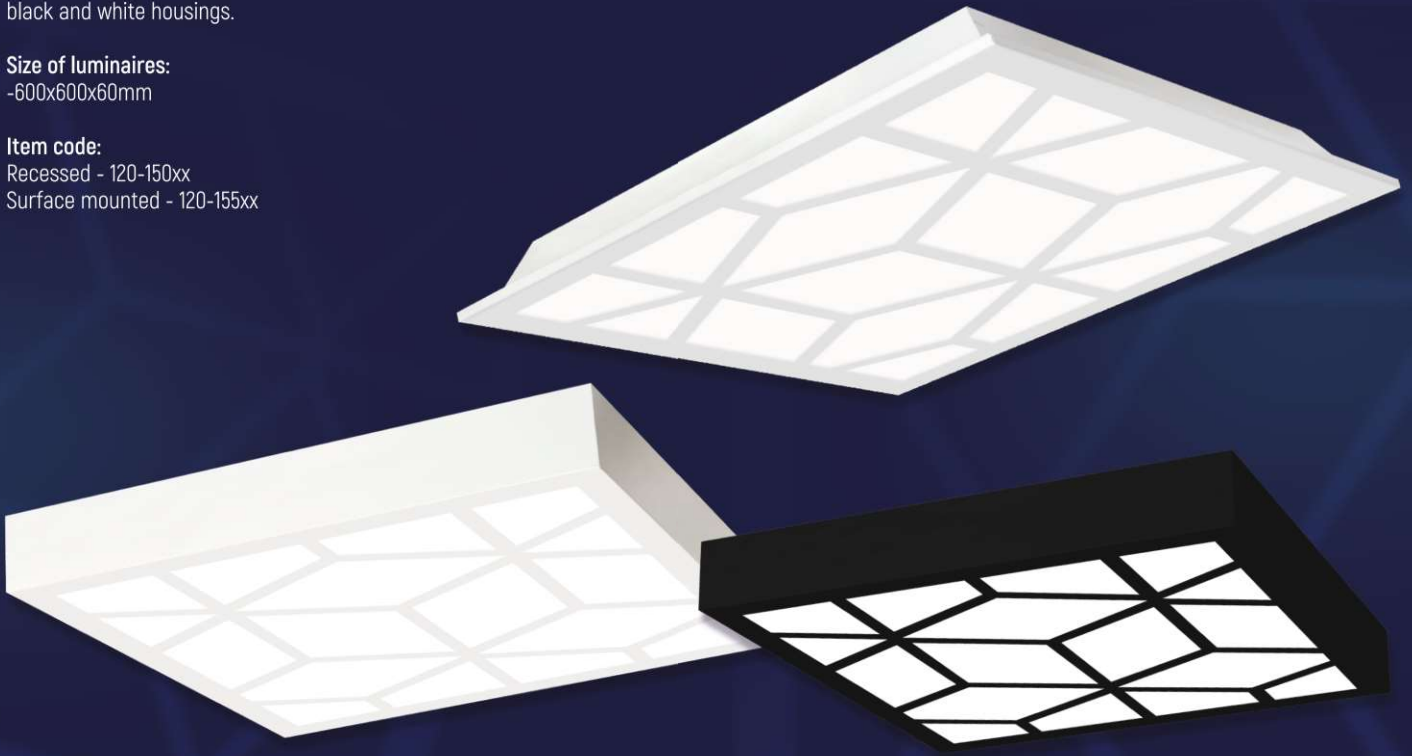
Size of luminaires:

-600x600x60mm

Item code:

Recessed - 120-150xx

Surface mounted - 120-155xx



DECORATIVE DAYLIGHT LUMINAIRES SERIES STONE

**Description:**

Series of surface mounted and recessed luminaires for modular ceilings type Armstrong, Grilyato and plasterboard suspended ceilings.

Technical details:

Metal housing is painted with powder paint.
Diffuser made of PMMA or from light-stabilized polystyrene.
Luminaires are equipped with LED strip type SMD 5000K 48W.

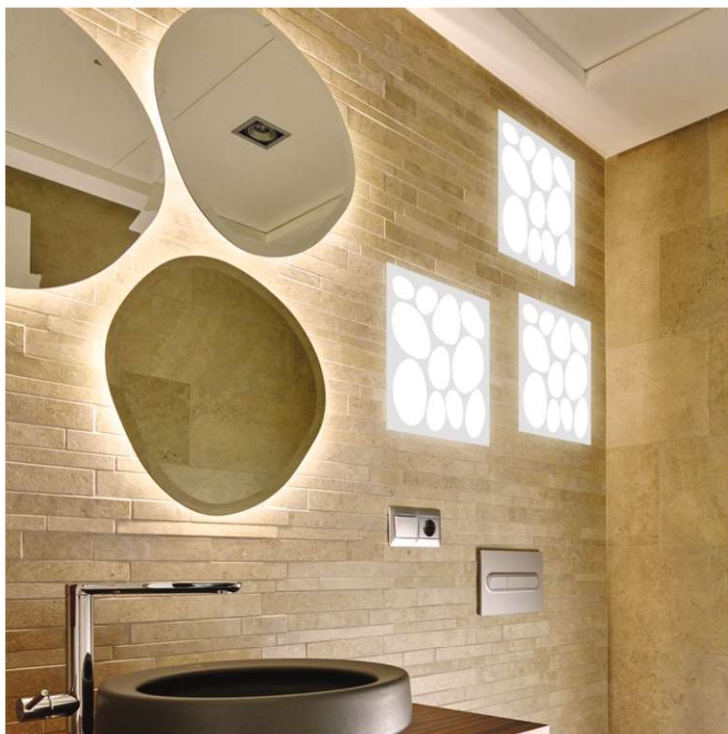
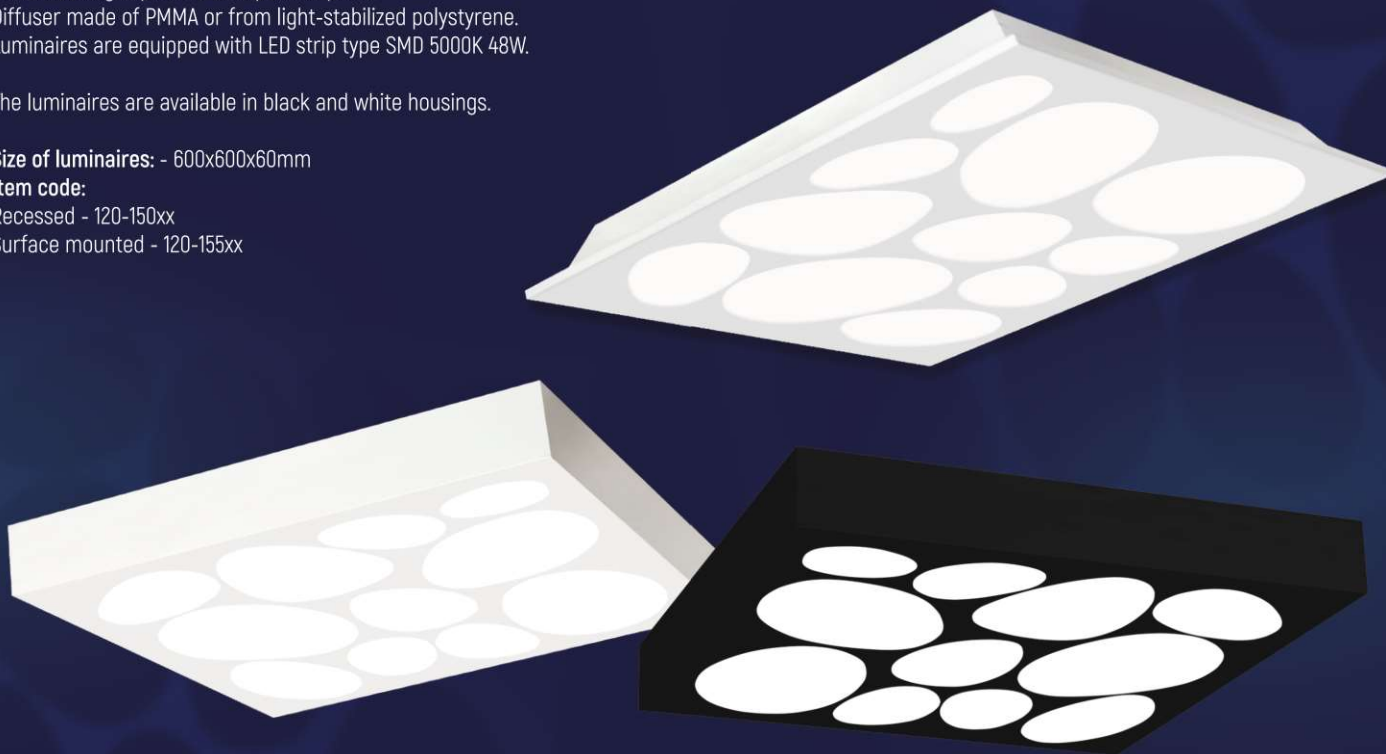
The luminaires are available in black and white housings.

Size of luminaires: - 600x600x60mm

Item code:

Recessed - 120-150xx

Surface mounted - 120-155xx



DECORATIVE DAYLIGHT LUMINAIRES SERIES FRAME and PLANET



Description:

Series of surface mounted and recessed luminaires for modular ceilings type Armstrong, Grilyato and plasterboard suspended ceilings.

Technical details:

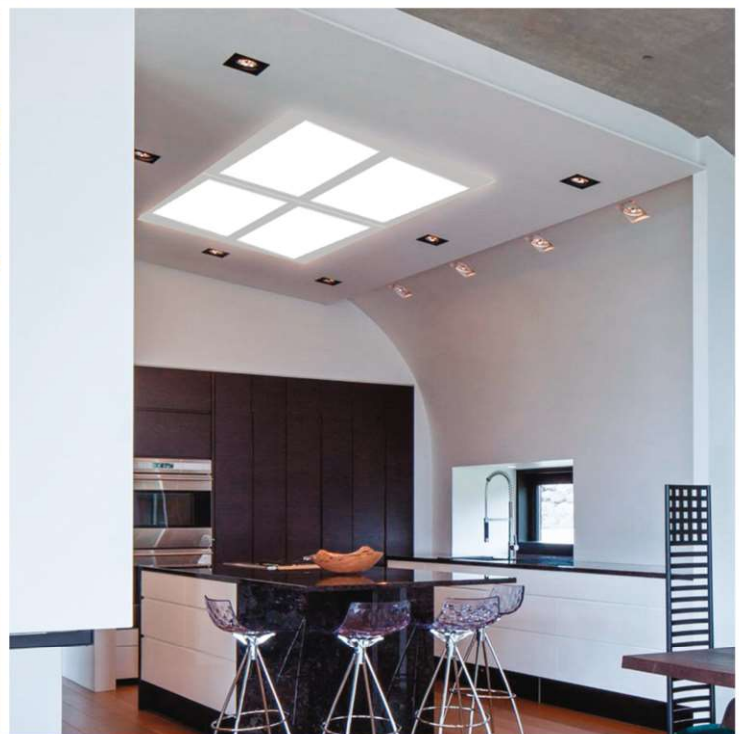
Metal housing is painted with powder paint.
Diffuser made of PMMA or from light-stabilized polystyrene.
Luminaires are equipped with LED strip type SMD 5000K 48W.

The luminaires are available in black and white housings.

Size of luminaires: - 600x600x60mm

Product code:

Recessed - 120-150xx Surface mounted - 120-155xx





The diverse structure of the diffusing glass of luminaires, opens up wide opportunities for more detailed design of premises.

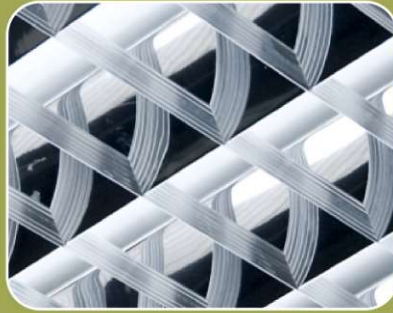


TYPES OF REFLECTORS AND DIFFUSERS FOR DAYLIGHT LUMINAIRES



Glossy double parabolic reflector (GDPR):

Made of glossy aluminum and has the shape of complete parabola, which guarantees ideal characteristics and ultimate brightness.



Single parabolic

Made of polished aluminum coated with a special film. Transverse plates made of corrugated aluminum.



Frosted double parabolic reflector (FDPR):

Made of frosted aluminum. The reflector makes it possible to reduce the brightness. Parabolic reflectors and transverse plates have the shape of complete parabola and guarantee ultimate brightness.



Prismatic diffuser:

Diffuser made of organic glass with a prismatic structure mounted in white metal frame. Ensures uniformity of illumination.



Pinspot diffuser:

Diffuser made of organic glass with a dot structure mounted in white metal frame. Ensures uniformity of illumination.



Opal diffuser:

Diffuser made of organic glass mounted in white metal frame. Ensures uniformity of illumination.

DAYLIGHT LUMINAIRES

LRV SERIES



LRV 218

Dimensions WxHxD: 295*595*75mm

1



LRV 418

Dimensions WxHxD: 595*595*75mm

Dimensions WxHxD: 600*600*75mm

Dimensions WxHxD: 605*605*75mm

2



LRV 236

Dimensions WxHxD: 295*1195*75mm

3



LRV 436

Dimensions WxHxD: 1195*595*75mm

4



Description:

Recessed luminaires for modular (type Armstrong) and plasterboard suspended ceilings.

Technical details:

Metal housing is painted with powder paint.

Installation: Are built into the ceiling.

Purpose: Offices, corridors, auditoriums, etc.

Additionally: Can be equipped with accumulator batteries for emergency lighting.

Name	Item code	Wattage	Color temperature		Dimensions WxHxD (mm)	kg	Photo N°
LEDTUBE LRV 218	166-15150	2x9W	5000 K	275*580	300*600*75	1,65	1
LEDTUBE LRV 418	166-15155	4x9W	6000 K	575*575	595*595*75	2,69	2
LEDTUBE LRV 418	166-15160	4x9W	6000 K	590*590	600*1200*75	3,01	2
LEDTUBE LRV 418	166-15164	4x9W	6000 K	575*575	600*600*75	2,69	2
LEDTUBE LRV 236	166-15165	2x16W	6000 K	275*1175	300*1200*75	5,49	3
LEDTUBE LRV 436	166-15170	4x16W	6000 K	575*1175	600*1200*75	-	4

FRR luminaires can be equipped with different types of light sources.

FRR luminaires have glossy double parabolic reflector (GDPR)



Type Ledtube

Equipped with LED lamps type LedTube 60cm or 120cm depending on the dimensions of luminaire housing

DAYLIGHT LUMINAIRES

LZV SERIES



LZV 218

Dimensions WxHxD: 295*595*75mm

1



LZV 418

Dimensions WxHxD: 595*595*75mm

Dimensions WxHxD: 600*600*75mm

Dimensions WxHxD: 605*605*75mm

3



LZV 236

Dimensions WxHxD: 295*1195*75mm

2



LZV 436

Dimensions WxHxD: 1195*595*75mm

4



Name	Item code	Wattage	Color temperature		Dimensions WxHxD (mm)	kg	Photo N°
PRIZMALED 4X9W 218	166-15000	4x9Bt	5000K	575x575	595x595x75	1.98	1
PRIZMALED 4X9W 418	166-15005	4x9Bt	5000K	575x575	595x595x75	3.54	3
PRIZMALED 5X9W 418	166-15010	5x9Bt	5000K	575x575	595x595x75	3.54	3
PRIZMALED 10X9W 418	166-15019	10x9Bt	5000K	575x575	595x595x75	3.30	3
PRIZMALED 7X9W 418	166-15030	7x9Bt	5000K	575x575	600x600x75	3.30	3
LEDTUBE LZV 218 PRIZMA	166-15175	2x9Bt	6000K	275x580	295x595x75	1.65	1
LEDTUBE LZV 418 PRIZMA	166-15180	4x9Bt	6000K	575x575	595x595x75	2.69	3
LEDTUBE LZV 418 PRIZMA	166-15185	4x9Bt	6000K	575x575	600x600x75	2.72	3
LEDTUBE LZV 236 PRIZMA	166-15190	2x16Bt	6000K	275x1175	1200x600x75	6.90	2
LEDTUBE LZV 218 PRIZMA	166-15195	4x16Bt	6000K	590x1190	1200x600x75	6.90	4

Description:

Recessed luminaires for modular (type Armstrong) and plasterboard suspended ceilings.

Technical details:

Metal housing is painted with powder paint.

Diffuser made of PMMA or from light-stabilized polystyrene.

Installation: Are built into the ceiling.

Purpose: Offices, corridors, auditoriums, etc.

Additionally: Can be equipped with accumulator batteries for emergency lighting.

FCR luminaires can be equipped with diffusers of different types.



OPAL



PRIZMATIC



PINSPOT

DAYLIGHT LUMINAIRES

GRILIATO SERIES



GRILIATO OPALLED 418

Dimensions WxHxD: 600x600x75mm



GRILIATO REFLEKTOR 418

Dimensions WxHxD: 600x600x75mm



GRILIATO PINSPOTLED 418

Dimensions WxHxD: 600x600x75mm



GRILIATO PRIZMALED 418

Dimensions WxHxD: 600x600x75mm



GRILIATO luminaires can be equipped with different types of light sources.

Name	Item code	Wattage	Световая температура		Dimensions WxHxD (mm)		Photo N°
PRIZMALED 10x9W 418	166-150340	10x9Вт	5000K		600x600x75	3.79	1
PINSPOTLED 5x9W LZV 418	166-15086	5x9Вт	5000K		600x600x75	3.59	2
PINSPOTLED 10x9W LZV 418	166-15094	10x9Вт	5000K		600x600x75	3.79	2
LEDTUBE LZV 418 PINSPOT	166-15214	4x9Вт	6000K		575x575	3.79	4
LEDTUBE LZV 4x9W	166-15237	4x9Вт	6000K		575x575	3.59	4

Description:

Recessed luminaires for ceilings type GRILIATO.

Technical details:

Metal housing is painted with powder paint.

Diffuser made of PMMA, light-stabilized polystyrene or aluminum.

Installation: Are built into the ceiling.

Purpose: Offices, corridors, auditoriums, etc.

Additionally: Can be equipped with accumulator batteries for emergency lighting.

GRILIATO luminaires can be equipped with diffusers of different types.

Type BARLED

Equipped with LED strips
type SMD 5000K
from 2x9W to 10x9W

Type Ledtube

Equipped with LED
lamps type Ledtube



OPAL

PRIZMATIC

PINSPOT

REFLECT

DAYLIGHT LUMINAIRES MODERNA LRN SERIES



MODERNA LRN 218

Dimensions WxHxD: 630x355x60mm



MODERNA LRN 418

Dimensions WxHxD: 630x630x60mm



MODERNA LRN 236

Dimensions WxHxD: 355x1240x60mm



MODERNA LRN 436

Dimensions WxHxD: 630x1240x60mm



MODERNA LRN luminaires can be equipped with different types of light sources.

Type Ledtube

Equipped with LED lamps type LedTube
60cm or 120cm depending on the dimensions
of luminaire housing

Description:

Surface mounted luminaires.

Technical details:

Metal housing is painted with powder paint. Installation: On ceiling.

Purpose: Offices, corridors, auditoriums, etc.

Additionally: Can be equipped with accumulator
batteries for emergency lighting.

MODERNA LRN luminaires have
glossy double parabolic reflector (GDPR)



DAYLIGHT LUMINAIRES MODERNA SERIES



MODERNA 136

Dimensions WxHxD: 310x1240x60mm



MODERNA 418

Dimensions WxHxD: 620x620x80mm



MODERNA 218

Dimensions WxHxD: 620x350x60mm



MODERNA 436

Dimensions WxHxD: 620x1240x60mm



MODERNA 236

Dimensions WxHxD: 350x1240x60mm



MODERNA 258

Dimensions WxHxD: 350x1650x60mm



MODERNA 458

Dimensions WxHxD: 620x1650x60mm



MODERNA luminaires can be equipped with different types of light sources.

Type BARLED

Equipped with LED strips type SMD 5000K from 2x9W to 20x9W depending on the dimensions of luminaire housing

Type Ledtube

Equipped with LED lamps type LedTube 60cm or 120cm depending on the dimensions of luminaire housing

Description:

Surface mounted luminaires.

Technical details:

Metal housing is painted with powder paint. Diffuser made of PMMA or from light-stabilized polystyrene.

Installation: On ceiling.

Purpose: Offices, corridors, auditoriums, etc.

Additionally: Can be equipped with accumulator batteries for emergency lighting.

MODERNA luminaires can be equipped with diffusers of different types.



OPAL



PRIZMATIC



PINSPOT

DAYLIGHT LUMINAIRES DETAY SERIES



DETAY LRN 218

Dimensions WxHxD: 630x355x60mm



DETAY LRN 418

Dimensions WxHxD: 630x630x60mm



DETAY LRN 236

Dimensions WxHxD: 355x1240x60mm



DETAY LRN 436

Dimensions WxHxD: 630x1240x60mm



DETAY FRS luminaires can be equipped with different types of light sources.

Type Ledtube

Equipped with LED lamps type LedTube
60cm or 120cm depending on the
dimensions of luminaire housing

Description:

Surface mounted luminaires.

Technical details:

Metal housing is painted with powder paint.

Installation: On ceiling.

Purpose: Offices, corridors, auditoriums, etc.

Additionally: Can be equipped with accumulator batteries for emergency lighting.

DETAY LRN luminaires have glossy
double parabolic reflector (GDPR)



DAYLIGHT LUMINAIRES

DETAY SERIES



DETAY 218

Dimensions WxHxD: 630x355x60mm



DETAY 418

Dimensions WxHxD: 630x630x60mm



DETAY 236

Dimensions WxHxD: 355x1240x60mm



DETAY 258

Dimensions WxHxD: 355x1540x60mm



DETAY 436

Dimensions WxHxD: 630x1240x60mm



DETAY luminaires can be equipped with different types of light sources.

Type BARLED

Equipped with LED strips type SMD 5000K from 2x9W to 20x9W depending on the dimensions of luminaire housing

Type Ledtube

Equipped with LED lamps type LedTube 60cm or 120cm depending on the dimensions of luminaire housing

Description:

Surface mounted luminaires.

Technical details:

Metal housing is painted with powder paint.

Diffuser made of PMMA or from light-stabilized polystyrene.

Installation: On ceiling.

Purpose: Offices, corridors, auditoriums, etc.

Additionally: Can be equipped with accumulator batteries for emergency lighting.

DETAY luminaires can be equipped with diffusers of different types.



OPAL



PRIZMATIC



PINSPOT

DAYLIGHT LUMINAIRES UNIVERSAL SERIES



UNIVERSAL 218

Dimensions WxHxD: 595x295x60mm



UNIVERSAL 418

Dimensions WxHxD: 595x595x60mm
Dimensions WxHxD: 600x600x60mm



UNIVERSAL 236

Dimensions WxHxD: 295x1195x60mm



UNIVERSAL 436

Dimensions WxHxD: 1195x595x60mm



**UNIVERSAL luminaires can be equipped with LED strip
type SMD 5000K from 2x9W to 20x9W depending
on the dimensions of luminaire housing**

Description:

Luminaires of universal installation.

Technical details:

Metal housing is painted with powder paint.

Diffuser made of PMMA or from light-stabilized polystyrene.

Installation: On ceiling or into the ceiling.

Purpose: Offices, corridors, auditoriums, etc.

Additionally: Can be equipped with accumulator batteries for emergency lighting.

**UNIVERSAL luminaires can be equipped
with diffusers of different types.**



OPAL



PRIZMATIC



PINSPOT

DAYLIGHT LUMINAIRES LINEAR SERIES



LINEAR 136

Dimensions WxHxD: 1235x180x45mm



LINEAR 218

Dimensions WxHxD: 607x180x45mm



LINEAR 236

Dimensions WxHxD: 1235x180x45mm



LINEAR luminaires can be equipped with different types of light sources.

Type BARLED

Equipped with LED strips type SMD 5000K
from 2x9W to 8x9W depending on
the dimensions of luminaire housing

Type Ledtube

Equipped with LED lamps type LedTube
60cm or 120cm depending on
the dimensions of luminaire housing

Description:

Surface mounted luminaire.

Technical details:

Luminaire housing painted with white powder paint.

Diffuser made of PMMA or from light-stabilized polystyrene.

Installation:

On ceiling or wall.

Purpose:

Supermarkets and places where directional general lighting is needed
but without the requirement for a high degree of protection.

LINEAR luminaires can be equipped
with diffusers of different types.



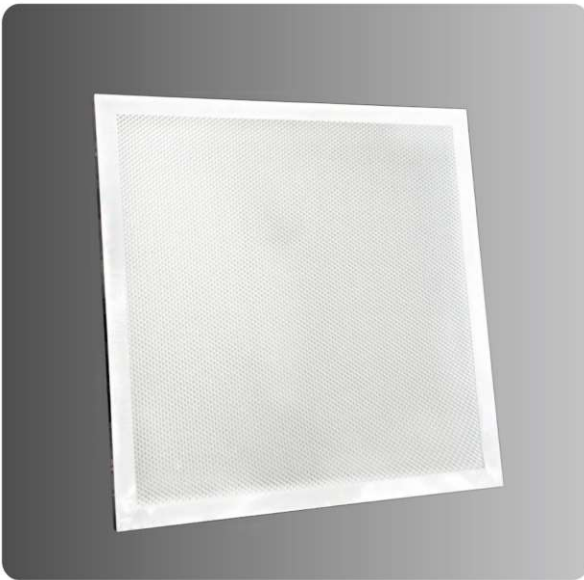
OPAL



PRISMATIC



PINSPOT



Recessed luminaire PRIZMALED MARS

Description:

Overhead light.

Technical details:

Prismatic diffuser.

An LED strip is used.

Installation:

To the ceiling.

Purpose: Offices, restaurants, cafe, conference rooms, shopping centers, audiences.



Name	Item code	Wattage	Dimensions WxHxD (mm)	kg
PRIZMALED MARS 4X8 W32	167-15606	4x8 W	595x595x20	-



Luminaire series VEGA

Description: LED Downlight

Technical details: Housing made of plastic, aluminum;

back in anodized aluminum,

diffuser matte.

Equipped with driver and SMD type LEDs.

Installation: On the ceiling.

Purpose: Schools, hospitals, hotels, houses and other premises with increased requirements to energy consumption and lighting quality.

Optional: May be equipped with rechargeable batteries for emergency lighting.



Name	Item code	Wattage	Luminous flux	Color temperature	Dimensions WxH (mm)
LED VEGA 42W	167-15725	42 W	3780lm	6500K	600x600



luminaire SIRIUS

Description: LED Downlight

Technical details: Housing made of plastic, aluminum;

back in anodized aluminum,

diffuser matte.

Equipped with driver and SMD type LEDs.

Installation: On the ceiling.

Purpose: Schools, hospitals, hotels, houses and other premises with increased requirements

to energy consumption and lighting quality.

Optional: May be equipped with rechargeable batteries for emergency lighting.



Name	Item code	Wattage	Luminous flux	Color temperature	Dimensions WxH (mm)
LED SIRIUS 42W	165-150377	42 W	3780lm	6500K	600x600



luminaire LED HALLEY

Description: LED Downlight

Technical details: Housing made of plastic, aluminum;

back in anodized aluminum,

diffuser matte.

Equipped with driver and SMD type LEDs.

Installation: On the ceiling.

Purpose: Schools, hospitals, hotels, houses and other premises with increased requirements

to energy consumption and lighting quality.

Optional: May be equipped with rechargeable batteries for emergency lighting.



Name	Item code	Wattage	Luminous flux	Color temperature	Dimensions WxH (mm)
(HAIGER) Свет-к LED HALLEY SMD WHITE	116-15428	50 W	3900lm	6000K	1200x



Hermetic series LZG

Description:

Dust-proof industrial luminaire.

Technical details:

Lamp housing made of ABS plastic. There is a polyurethane seal.

Transparent polystyrene diffuser (PS). Plastic mounts hold the diffuser tightly.

Installation: On the ceiling or wall. There is a mount for suspension on a cable.

Purpose: Warehouses, production shops, open public places, and places with a high degree of dust and humidity



Name	Item code	Wattage max	Color temperature	Dimensions WxHxD (mm)	kg
Ledtube LZG 118	167-15300	9 W	without lamp	600x90x100	0.80
Ledtube LZG 218	167-15305	2x9 W	without lamp	600x130x100	0.84
Ledtube LZG 136	167-15310	16/18 W	without lamp	1200x90x100	1.52
Ledtube LZG 236	167-15315	2x16/2x18 W	without lamp	1200x130x100	1.54
HAIGER Ledtube LZG	167-15330	1x9 W	without lamp	600x90x100	0.80
HAIGER Ledtube LZG	167-15332	2x9 W	without lamp	600x130x100	0.84
HAIGER Ledtube LZG	167-15334	1x18 W	2 sided connection	1200x90x100	1.52
HAIGER Ledtube LZG	167-15336	2x18 W	2 sided connection	1200x130x100	1.54
LZG BARLED 4000K	167-03100	3x18 W	1600lm	4000K	-



LEDTUBE PRIZMABOX

Description: LED dust and water tight industrial luminaire.

Technical details:

Lamp housing made of ABS plastic. There is a polyurethane seal. Transparent diffuser

from polystyrene (PS). Plastic mounts hold the diffuser tightly. Equipped with LED

lamps like LED TUBE T8. Housing of luminaire is painted in white and gray powder paint.

Can be equipped with rechargeable batteries for emergency lighting.

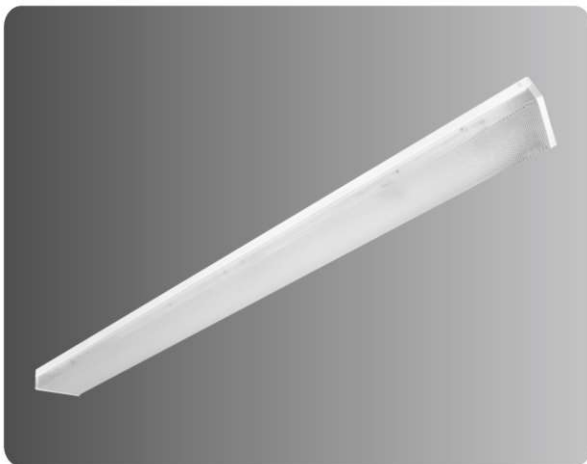
Installation: On the ceiling or wall. There is a mount for suspension on a cable ..

Purpose: Warehouses production halls, open public places and places

with a high degree of dust and humidity.



Name	Item code	Wattage	Color temperature	Dimensions WxHxD (mm)	kg
PRIZMABOX 218 2x9W Grey	167-15340	2x9 W	6000K	665x130x10	0.84
PRIZMABOX 218 2x9W White	167-15345	2x9 W	6000K	665x130x10	0.84
PRIZMABOX 236 2x16W Grey	167-15341	2x16 W	6000K	1280x130x10	1.54
PRIZMABOX 236 2x16W White	167-15346	2x16 W	6000K	1280x130x10	1.54



Invoice series Ledtube LZN-FD

Description: LED laid on luminaire.

Technical details: The luminaire housing is painted with white powder paint.
Prismatic diffuser.

The lamp is equipped with LED lamps of the Ledtube T8 type.

Can be equipped with rechargeable batteries for emergency lighting.

Installation: On the ceiling or wall.

Purpose: Offices, conference rooms, audiences, etc.



Name	Item code	Wattage	Luminous flux	Dimensions WxHxD (mm)	kg
Ledtube LZN-FD 218	167-15350	18 W	1080lm	650x130x55	1.50
Ledtube LZN-FD 236	167-15360	2x16/2x18 W	2160lm	1230x160x70	2.2
Ledtube LZN-FD/258 (without lamp)	167-15367	2x58 W		1560x130x55	2.0
Grill for LZN FD 2X18W	116-15133				
Grill for LZN FD 2X36W	116-15135				
Grill for LZN FD 2X58W	116-15136				



Invoice series LED LZN

Description: LED laid on luminaire.

Technical details: The luminaire housing is painted with white powder paint.

Opal diffuser.

Equipped with LED strips type SMD.

Installation: On the ceiling or wall.

Purpose: Offices, audiences, shops, corridors, etc.



Name	Item code	Wattage	Color temperature	Dimensions WxHxD (mm)	kg
LED LZN 18W White 6000K	167-15510	18 W	6000K	600x130x55	0.4
LED LZN 36W White 6000K	167-15512	36 W	6000K	1200x75x25	0.72



FTD

Description:

Ceiling and wall lamp with diffuser.

Technical details:

Housing of luminaire is painted with white powder paint.

Polystyrene diffuser.

Equipped with T8 LED luminaire.

Installation:

On the ceiling or wall.

Purpose:

Offices, classrooms, shops, corridors and others.



Name	Item code	Wattage	Color temperature	Dimensions WxHxD (mm)	kg
LED FTD-202	116-16210	2x9 W	6000K	600x148x45	1.30
LED FTD-402	116-16215	2x18 W	6000K	1200x148x45	2.20



FTG

Description:

Ceiling and wall lamp with diffuser.

Technical details:

Housing of luminaire is painted with white powder paint.

Polystyrene diffuser.

Equipped with T8 LED luminaire.

Installation: On the ceiling or wall.

Purpose: Offices, audiences, shops, corridors and others.



Name	Item code	Wattage	Luminous flux	Dimensions WxHxD (mm)	kg
FTG-202 2x18W	116-16164	2x18 W	920lm	600x148x45	1.30
FTG-401 1x36W	116-16167	36 W	940lm	1200x100x45	1.30
LED FTG-202 2x9W	116-16225	2x9 W	1530lm	600x148x45	1.30
LED FTD-402 2x18W	116-16230	2x18 W	3495lm	1200x148x45cm	2.20



luminaire for blackboard

Description:

Wall Light.

Technical details:

Housing of luminaire is painted with white powder paint.

Used with T8 LED bulbs.

Installation:

On the wall using the bracket.

Purpose:

Lighting of educational boards in schools, universities.



Name	Item code	Dimensions WxHxD (mm)	kg
Ledtube 1x16W	167-15470	1228x75x165	1.60
Bracket	116-15142		



Ledtube TMS

Description: Overhead luminaire.

Technical details: Lamp housing painted white powder paint.

The lamp is equipped with LED lamps.

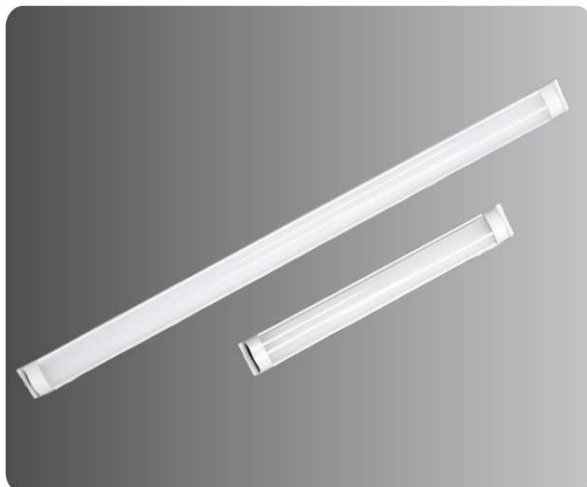
The absence of a diffuser avoids light distortion.

Installation: On the ceiling or wall.

Destination: Supermarkets and places where general directional is needed lighting, but without the requirements for a high degree of protection.



Name	Item code	Wattage	Dimensions WxHxD (mm)
Reflector for TMS 2x18 (1x18)	116-15020		
Reflector for TMS 2x36 (1x36)	116-15022		
Ledtube TMS NEW 1x9W without lamp	167-15451	1x9 W	620x51x80
Ledtube TMS NEW 2x9W without lamp	167-15453	2x9 W	620x50x36
Ledtube TMS NEW 1x16W without lamp	167-15455	1x16 W	1200x50x36
Ledtube TMS NEW 2x16W without lamp	167-15457	2x16 W	1200x50x36
Ledtube TMS NEW 1x58W without lamp	167-15459	1x58 W	1500x50x36
Ledtube TMS NEW 2x58W without lamp	167-15461	2x58 W	1500x50x36



Luminaire series LED FLD

Description:

LED overhead light.

Technical details:

Lamp housing plastic. Equipped with LED strips type SMD. Opal diffuser.

Installation:

To the ceiling and wall.

Purpose:

Offices, audiences, shops, corridors, etc.



Name	Item code	Wattage	Color temperature	Dimensions WxHxD (mm)
LED FLD-202 18 White	116-03280	18 W	6000K	600x75x25
LED FLD-402 36 White	116-03282	36 W	6000K	1200x75x25



Luminaire series LED TAM (Type: SMD)

Description:

LED overhead light.


Technical details:

Lamp housing plastic. Equipped with LED strips type SMD. Opal diffuser.

Installation:

To the ceiling and wall.

Purpose:

Offices, audiences, shops, corridors, etc.

Name	Item code	Wattage	Color temperature	Dimensions WxHxD (mm)
LED TAM-202 24W	116-03320	24 W	6000/6500K	600x63x47
LED TAM-402 36W	116-15322	36 W	6000K	1200x63x47
LED TAM-402 48W	116-03322	48 W	6000K	1200x63x47
LED TAM-402S 36W	116-03328	36 W	6000K	1200x63x47



Luminaire series LED TAW (Type: SMD)

Description:

LED overhead light.


Technical details:

Lamp housing plastic. Equipped with LED strips type SMD.
Opal diffuser.

Installation:

To the ceiling and wall.

Purpose:

Offices, audiences, shops, corridors, etc.

Name	Item code	Wattage	Color temperature	Dimensions WxHxD (mm)
LED TAW-202 18W	116-03330	18 W	6400K	623x54x34
LED TAW-402 36W	116-03332	36 W	6500K	1230x54x34
LED TAW-202S 18W SENSOR	116-03334	18 W	6500K	623x54x34
LED TAW-402 36W	116-15302	36 W	6500K	1230x54x34



Luminaire series LED TAB

Description:

LED overhead light.


Technical details:

Lamp housing plastic. Matte diffuser. Opal diffuser.
Equipped with LED strips type SMD.

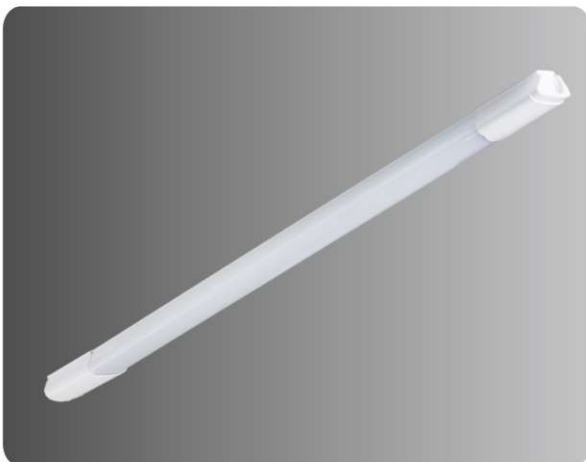
Installation:

To the ceiling and wall.

Purpose:

Offices, audiences, shops, corridors, etc.

Name	Item code	Wattage	Color temperature	Dimensions WxHxD (mm)
LED TAB-202 18W	116-03400	18 W	6500K	600x75x25
LED TAB-402 36W	116-03402	36 W	6500K	1200x75x25



Luminaire series LED TAF

Description:

LED overhead light.


Technical details:

Lamp housing plastic. Matte diffuser.
Equipped with LED strips type SMD.

Installation:

To the ceiling and wall.

Purpose:

Offices, audiences, shops, corridors, etc.

Name	Item code	Wattage	Color temperature	Dimensions WxHxD (mm)
LED TAF-202 18W	116-03410	18 W	6500K	635x58x30
LED TAF-402 36W	116-03412	36 W	6500K	1235x58x30
LED TAF-202S 18W	116-03416	18 W	6500K	635x58x30



Luminaire series LED TAC

Description:

LED overhead light.


Technical details:

Lamp housing plastic. Equipped with LED strips type SMD.

SMD type. SMD type.

Installation:

To the ceiling and wall.

Purpose:

Furniture, showcases, bathrooms and others.



Name	Item code	Wattage	Luminous flux	Dimensions WxHxD (mm)
LED TAC-402 36W	116-15346	36 W	2240lm	1200x75x25



Luminaire series T5 LED

Description:

LED wall light.


Technical details:

Lamp housing plastic. Equipped with LED strips type SMD.

Installation:

On the ceiling or wall.

Purpose: Offices, audiences, shops, corridors, etc.



Name	Item code	Wattage	Color temperature	Dimensions WxHxD (mm)
LED T5 18W	117-03294	18 W	6500K	1174x22x36
LED FX T5 5W	117-03300	5 W	6500K	286x22x36
LED FX T5 9W	117-03302	9 W	6500K	566x22x36
LED FX T5 14W	117-03304	14 W	6500K	872x22x36
LED FX T5 18W	117-03306	18 W	6500K	1174x22x36



Luminaire series T5 LED

Description:

LED overhead light.

b

Lamp housing plastic. Equipped with LED strips type SMD.

SMD type. SMD type.

Installation:

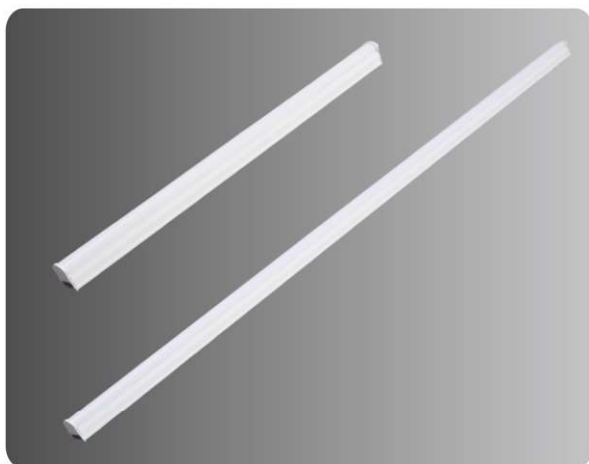
To the ceiling and wall.

Purpose:

Furniture, showcases, bathrooms and others.



Name	Item code	Wattage	Color temperature	Dimensions WxHxD (mm)
LED T5 S-300 4W	116-03420	4 W	6500K	289x22x34
LED T5 S-600 8W	116-03422	8 W	6500K	569x22x34
LED T5 S-900 12W	116-03424	12 W	6500K	872x22x34
LED T5 S-1200 18W	116-03426	18 W	6500K	1174x22x34



Luminaire series SP LED

Description:

LED wall light with diffuser.


Technical details:

Lamp housing plastic. Equipped with LED strips type SMD.

Installation:

On the wall.

Purpose: Pictures, bathrooms and others.



Name	Item code	Wattage	Luminous flux	Dimensions WxHxD (mm)
LED SP 8W T5	117-15310	8 W	720lm	600x30x20
LED SP 16W T5	117-15314	16 W	1440lm	1200x30x20



Светильник MIRROR

Description:
LED wall light with diffuser.

Technical details:
Luminaire housing and diffuser made of opal acrylic. The angle of illumination can be adjusted with using the rotary mechanism 90°. Equipped with LED strips type SMD.

Installation:

On the wall.

Purpose:

Pictures, bathrooms and others.



Name	Item code	Wattage	Color temperature	Luminous flux
LED MIRROR 5W	117-15260	5 W	3000K	300 lm
LED MIRROR 5W	117-15262	5 W	5700K	300 lm
LED MIRROR 7W	117-15264	7 W	3000K	500 lm
LED MIRROR 7W	117-15266	7 W	5700K	500 lm
LED MIRROR 10W	117-15268	10 W	5700K	900 lm
Настенное крепление LED MIRROR	117-15269			



Luminaire series PR LED

Description:

LED wall light with diffuser.

Technical details:

Housing made of chromed metal. Frosted glass diffuser.

Equipped with LED strips type SMD.

Installation:

On the wall.

Purpose:

Pictures, bathrooms and others.



Name	Item code	Wattage	Color temperature	Dimensions WxHxD (mm)
LED PR300	119-03017	6 W	4000K	310x123x30
LED PR500	119-03021	9 W	4000K	510x123x30



Светильник MB096 8W CHROME

Description:

LED wall light.

Technical details:

Housing made of chromed metal. Opal acrylic diffuser.

Equipped with LED strips type SMD.

Installation:

On the wall.

Purpose:

Pictures, bathrooms and others.



Name	Item code	Wattage	Color temperature	Dimensions WxHxD (mm)
Mb096 CHROME 8W	117-03240	8 W	4000K	525x22x100



Luminaire series LED DB-MR017

Description:

LED wall light with diffuser.

Technical details:

Lamp housing plastic. Equipped with LED strips type SMD.

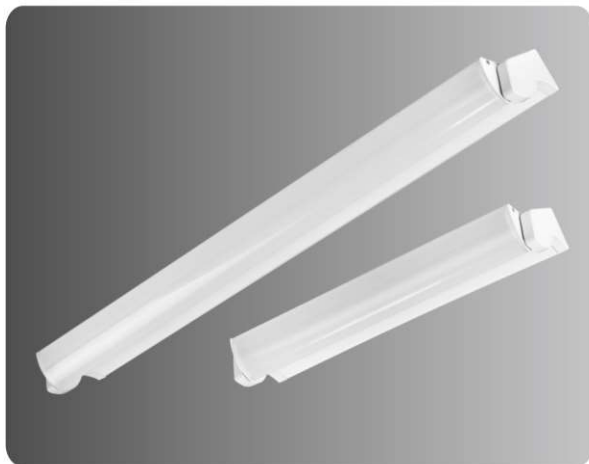
Installation:

On the wall.

Purpose: Pictures, bathrooms and others.



Name	Item code	Wattage	Color temperature	Dimensions WxHxD (mm)
LED DB-MR017- 8W	117-03316	8 W	4000K	320x78x28
LED DB-MR017- 15W	117-03318	15 W	4000K	620x78x28



Luminaire series DB-MR0368 LED

Description:

LED wall light with diffuser.

Technical details:

Lamp housing plastic. Equipped with LED strips type SMD.

Installation:

On the wall.

Purpose: Pictures, bathrooms and others.



Name	Item code	Wattage	Color temperature	Dimensions WxHxD (mm)
LED DB-MR0368-8W	117-03320	8 W	4000K	300x77x40
LED DB-MR0368-15W	117-03322	15 W	4000K	600x77x40



Luminaire series DB-LTD-033 LED

Description:

LED wall light with diffuser.

Technical details:

Lamp housing plastic. Equipped with LED strips type SMD.

Installation:

On the wall.

Purpose: Pictures, bathrooms and others.



Name	Item code	Wattage	Color temperature	Dimensions WxHxD (mm)
LED DB LTD 033 8W	117-03324	8 W	4000K	282x49x51
LED DB LTD 033 15W	117-03326	15 W	4000K	282x49x51



Luminaire series DB-MR016 LED

Description:

LED wall light with diffuser.

Technical details:

Lamp housing plastic. Equipped with LED strips type SMD.

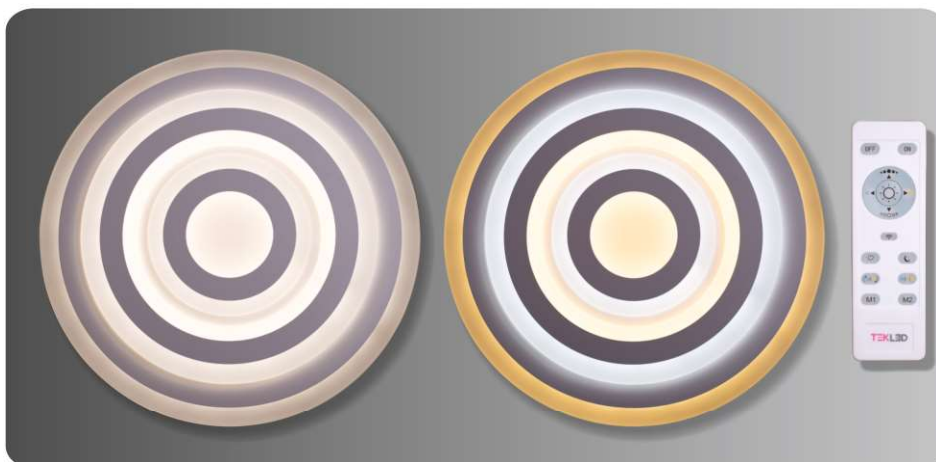
Installation:

On the wall.

Purpose: Pictures, bathrooms and others.



Name	Item code	Wattage	Color temperature	Dimensions WxHxD (mm)
LED DB-MR016- 8W	117-03313	8 W	4000K	340x77x35
LED DB-MR016- 15W	117-03314	15 W	4000K	560x77x35



LED SARMAL ROUND

Description:

LED wall light with

acrylic reflector.

Has a remote control.

Technical details:

Lamp housing plastic.

Equipped with LED strips type SMD.

Installation:

On the wall.

Purpose: Residential premises, offices, shops and so on.



LED SARMAL ROUND 60W with remote control 2 COLORS				
Item code	Wattage	Color temperature	Dimensions WxHxD (mm)	
118-03502	60 W	4000K-6000K	500x50	



LED SARMAL KVADRO

Description:

LED wall light with acrylic reflector.
Has a remote control.

Technical details:

Lamp housing plastic.
Equipped with LED strips type SMD.

Installation:

On the wall.

Purpose: Residential premises, offices, shops and so on.



LED SARMAL KVADRO 80W with remote control 2 COLORS

Item code	Wattage	Color temperature	Dimensions WxHxD (mm)
118-03504	80 W	4000K-6000K	500x50



Ceiling luminaire LED ARES

Description:

Ceiling, wall luminaire.

Technical details:

Housing and diffuser made of plastic.
Equipped with electronic driver and special round strap type SMD.

Installation:

On the ceiling, the wall.

Purpose:

Residential premises, offices, shops, etc.



Name	Item code	Wattage	Color temperature	Dimensions WxHxD (mm)
LED ARES 36W	118-03414	36 W	5000K	415x122



Ceiling luminaire BELLA LED

Description: LED ceiling, wall luminaire.

Technical details: Aluminum luminaire base.

Housing and diffuser made of polystyrene and plastic.

Equipped with SMD type setiodes and driver.

Installation: On the ceiling or wall.

Purpose: Residential premises, offices, shops, etc.



Name	Item code	Wattage	Color temperature	Dimensions WxHxD (mm)	kg
LED BELLA 24W	118-03349	24 W	4000K	330x330x55	0.61
LED BELLA 24W	118-033510	24 W	6000K	330x330x55	0.61
LED BELLA 36W	118-033540	36 W	4000K	380x380x55	1.15
LED BELLA 36W	118-033550	36 W	6000K	380x380x55	1.15
LED BELLA 48W	118-033580	48 W	4000K	480x480x70	1.7
LED BELLA 48W	118-033590	48 W	6000K	480x480x70	1.7
LED ECO BELL 14W	118-15500	14 W	5000K	253x253x56	-
LED ECO BELL 20W	118-15502	20 W	5000K	325x325x56	-
LED ECO BELL 26W	118-15504	26 W	5000K	375x375x56	-



Ceiling luminaire LED OREGANO

Description:

LED ceiling, wall luminaire.

Technical details:

The base of the lamp is made of aluminum.

Housing and diffuser made of polystyrene and plastic.

Equipped with driver and SMD type LEDs.

Installation:

On the ceiling or wall.

Purpose: Residential premises, offices, shops, etc.



Name	Item code	Wattage	Color temperature	Dimensions WxHxD (mm)
LED OREGANO 24W	118-03371	24 W	6000K	350x350x75
LED OREGANO 36W	118-03373	36 W	6000K	390x390x78
LED OREGANO 50W	118-033740	50 W	6000K	500x500x84



Ceiling luminaire LED WALLE

Description:

LED ceiling, wall luminaire.

Technical details:

The base of the lamp is made of aluminum.

Housing and diffuser made of polystyrene and plastic.

Equipped with driver and SMD type LEDs.

Installation: On the ceiling or wall.

Purpose: Residential premises, offices, shops, etc.



Name	Item code	Wattage	Color temperature	Luminous flux	Dimensions WxHxD (mm)
LED WALLE B 12W	118-03513	12 W	5000K	800lm	232x232x53
LED WALLE B 24W	118-03514	24 W	5000K	1500lm	354x354x55



Ceiling luminaire LED NIKA ROUND

Description: LED ceiling, wall luminaire.

Technical details: Aluminum luminaire base.

Polycarbonate housing and diffuser.

Equipped with driver and SMD type LEDs.

Installation: On the ceiling or wall.

Purpose: Residential premises, offices, shops, etc.



Name	Item code	Wattage	Color temperature	Dimensions WxHxD (mm)
LED NIKA ROUND 15W	118-03385	15 W	6000K	200x200x50
LED NIKA ROUND 20W	118-03386	20 W	4000K	300x300x50
LED NIKA ROUND 25W	118-03387	25 W	6000K	300x300x50
LED NIKA SQUARE 15W	118-03389	15 W	6000K	200x200x50
LED NIKA SQUARE 25W	118-03391	25 W	6000K	300x300x50



Ceiling luminaire LED STELLA

Description: LED ceiling, wall luminaire.

Technical details: Housing and diffuser of luminaire made of polystyrene and ABS plastic.

Equipped with LED strips type SMD.

Installation: On the ceiling or wall.

Purpose: Corridors, drawing rooms, offices, kitchens, etc.



Name	Item code	Wattage	Color temperature	Dimensions WxHxD (mm)	kg
LED STELLA 36W	118-03392	36 W	5000K	410x410x110	1,11
LED STELLA 48W	118-03394	48 W	5000K	510x510x110	1,54
LED STELLA 36W	118-03396	36 W	6000K	410x410x110	1,11



Ceiling luminaire GEMINI LED

Description:

LED ceiling, wall luminaire.

Technical details:

The base of the lamp is made of aluminum.

Housing and diffuser made of polystyrene and plastic.

Equipped with driver and SMD type LEDs.

Installation: On the ceiling or wall.

Purpose: Residential premises, offices, shops, etc.



Name	Item code	Wattage	Color temperature	Luminous flux	Dimensions DxD (mm)
GEMINI SQUARE LED 20W	165-15136	20 W	5500K	1600 lm	216x53
GEMINI ROUND LED 20W	165-15138	20 W	5500K	1600 lm	250x50



Ceiling luminaire LED ATHENA

Description:

LED ceiling, wall luminaire.

Technical details:

The base of the lamp is made of aluminum.

Housing and diffuser made of polystyrene and plastic.

Equipped with driver and SMD type LEDs.

Installation:

On the ceiling or wall.

Purpose:

Residential premises, offices, shops, etc.



Name	Item code	Wattage	Color temperature	Dimensions WxHxD (mm)
LED ATHENA 36W	118-03410	36 W	5000K	410x70
LED ATHENA 24W	118-03412	24 W	5000K	350x70



Ceiling luminaire OMEGA STANDART

Description:

Ceiling, wall luminaire.

Technical details:

Housing and diffuser made of plastic.

Equipped with LED strips type SMD.

Installation:

On the ceiling, the wall.

Purpose:

Residential premises, offices, shops, etc.



Name	Item code	Wattage	Color temperature	Dimensions WxHxD (mm)	kg
LED OMEGA STANDART 22W	118-15302	22 W	6000K	380x380x110	0.9



Ceiling luminaire COSMO with remote control

Description:

LED ceiling, wall luminaire.

Technical details:

The base of the lamp is made of aluminum. Equipped with LED strips type SMD.

Housing and diffuser made of polystyrene and plastic. Equipped with driver and SMD type LEDs.

Installation:

On the ceiling or wall.

Purpose:

Residential premises, offices, shops, etc.



Name	Item code	Wattage	Color temperature	Dimensions WxHxD (mm)	kg
LED COSMO 80W	118-153820	80 W	3000K-6000K	800x800x90	1.0
LED COSMO 80W	118-15383	80 W	5000K	800x800x90	1.0
LED COSMO 24W	118-033750	24 W	5000K	330x330x52	0.6
LED COSMO 24W	118-03376	24 W	6000K	330x330x52	0.6
LED COSMO 36W	118-033780	36 W	5500K	380x380x55	0.7
LED COSMO 50W	118-033792	50 W	5000K	480x480x70	0.8



Ceiling luminaire LED RIO

Description: Ceiling, wall luminaire.

Technical details: Housing and diffuser of luminaire made of polystyrene and ABS plastic.

Equipped with LED strips type SMD.

Installation: On the ceiling or wall.

Purpose: Residential premises, offices, shops, etc.



Name	Item code	Wattage	Color temperature	Dimensions WxHxD (mm)	kg
LED RIO 24W	118-033600	24 W	4000K	330x330x65	0.71
LED RIO 24W	118-033612	24 W	6000K	330x330x65	0.71
LED RIO 36W	118-033640	36 W	4000K	430x430x65	1.14
LED RIO 36W	118-033650	36 W	6000K	430x430x65	1.14
LED RIO 48W	118-033680	48 W	4000K	530x530x75	0.7
LED RIO 48W	118-033690	48 W	6000K	530x530x75	0.7

LED CHANDELIER with fan

Description: Ceiling lamp-fan 2 in 1.

Technical details: It has 3 rotation speeds: fast, medium, slow.
Separate or joint operation of the lamp and fan.

Installation: On the ceiling.

Purpose: Residential premises, shops, conference rooms, etc.



4

5

Name	Item code	Wattage	Color temperature	Dimensions D (mm)	Photo
Chandelier LED 9062 36W White with fan	158-19510	36 W	3000-5000K	D 1320	2
Chandelier LED 9062 36W Black with fan	158-19516	36 W	3000-5000K	D 1320	2
Chandelier LED 9063 36W with fan	158-19518	36 W	3000-5000K	D 1320	3
Chandelier LED 9088 36W Nickel with fan	158-19512	36 W	3000-5000K	D 1320	5
Chandelier LED 9067 36W Chrome with fan	158-19514	36 W	3000-5000K	D 1320	1
Chandelier LED 9063W 36W Wengle with fan	158-19520	36 W	3000-5000K	D 1320	3
Chandelier LED with fan 8044 36W WHITE	158-19523	36 W			4



Lamp with fan LED BIRSA

Description: Ceiling lamp-fan 2 in 1.

Technical details: It has 3 rotation speeds: fast, medium, slow.

Separate or joint operation of the lamp and fan.

Installation: On the ceiling.

Purpose: Residential premises, shops, conference rooms, etc.



Name	Item code	Wattage	Color temperature	Dimensions WxD (mm)
LED BIRSA WHITE 105W	165-03900	105 W	3000-6500K	620x160
LED BIRSA BLACK 105W	165-03902	105 W	3000-6500K	620x160
LED BIRSA SILVER 105W	165-03904	105 W	3000-6500K	620x160
LED BIRSA WOODEN 105W	165-03906	105 W	3000-6500K	620x160

CHANDELIER LED BL with fan

Description: Ceiling lamp-fan 2 in 1.

Technical details: It has 3 rotation speeds: fast, medium, slow.
Separate or joint operation of the lamp and fan.

Installation: On the ceiling.

Purpose: Residential premises, shops, conference rooms, etc.



Name	Item code	Wattage	Color temperature	Dimensions WxHxD (mm)	Photo
Chandelier LED BL-2010 12W WENGE 110V with fan	157-15010	12 W	2700/3000/6000K	700x390x210	4
Chandelier LED BL-1650 12W WENGE 110V with fan	157-15012	12 W	2700/3000/6000K	200x480x320	1
Chandelier LED BL-2124 12W WHITE 110V with fan	157-15014	12 W	2700/3000/6000K	540x540x390	5
LyustraLED BL-2053 12W WOOD GRAIN 110V svent-m	157-15016	12 W	2700/3000/6000K	750x450x460	2
Chandelier LED 1001 12W with fan	158-19522	12 W	3000/5000K	1440x1440x450	3

Luminares Series LED DORRIS

Description:

Ceiling, wall luminaire.

Technical details:

Housing and diffuser made of polystyrene and ABS plastic.

Equipped with LED strips type SMD.

Installation:

To the ceiling.

Purpose:

Corridors, living rooms, offices, kitchens, etc.



Name	Item code	Wattage	Luminous flux	Color temperature	Dimensions WxD (mm)
LED DORIS ROSE GOLD	165-15188	20 W	1600lm	5500K	300x70
LED DORIS SILVER	165-15190	20 W	1600lm	5500K	300x70
LED DORIS NEW SILVER	165-151890	20 W	1600lm	4000K	300x70





Luminaire KVADRO LED

Description:

Recessed luminaire for false ceilings.

Technical details:

Case made of metal. Frosted glass diffuser.

Equipped with SMD type LEDs and driver.

Installation:

Built into the ceiling using holders (included).

Purpose:

Shops, conference rooms, restaurants, exhibition halls, museums and other places.



Name	Item code	Wattage	Color temperature	Luminous flux	Dimensions ДхГ (мм)
KVADRO LED 30W	165-15162	30 W	5500K	3090lm	259x69



Luminaire series LED SLIM PANEL

Description:

Ceiling luminaire. Ultra-thin light panel.

Technical details:

The body is made of anodized aluminum, in the end sides of which are mounted LEDs emitting a luminous flux at the ends of a light guide lens. Diffuser matt.

Light source: SMD 3528 type LEDs.

Input voltage: 100-245V.

Service Life: Over 30,000 hours.

Temperature condition: from -20 °C to +45 °C.

Installation:

Built into the ceiling or ceiling (using an installation accessory).

Purpose:

Schools, hospitals, hotels, residential buildings and other facilities.



Name	Item code	Wattage	Температура	Dimensions ШхВ (мм)
LED SLIM PANEL	165-030480	40 W	6000K	595x595
LED SLIM PANEL	165-030540	55 W	6000K	595x595



Luminaire LED PANEL

Description:

Ceiling luminaire. Ultra-thin light panel.

Technical details:

The body is made of anodized aluminum, in the end sides of which are mounted LEDs emitting a luminous flux at the ends of a light guide lens. Diffuser matt.

Light source: SMD 3528 type LEDs.

Input voltage: 100-245V.

Service Life: Over 30,000 hours.

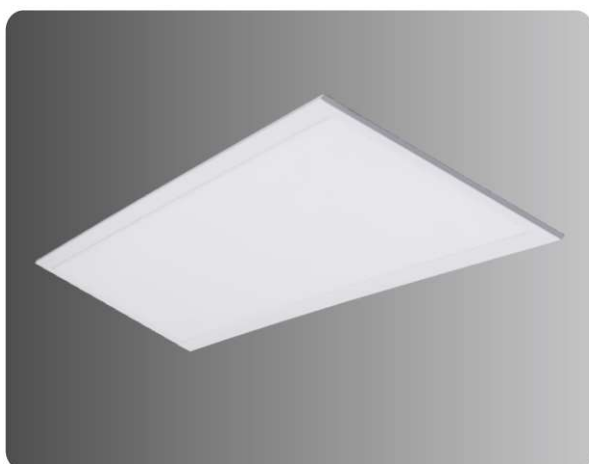
Temperature condition: from -20 °C to +45 °C.

Installation: Built into the ceiling or ceiling (using an installation accessory).

Purpose: Schools, hospitals, hotels, houses and other rooms.



Name	Item code	Wattage	Luminous flux	Color temperature	Dimensions ШхВ (мм)
LED PANEL 25W	165-03064	25 W	2200lm	6400K	295x595



Luminaire LED PANEL

Description: Ceiling luminaire. Ultra-thin light panel.

Technical details:

The body is made of anodized aluminum, in the end sides of which are mounted

LEDs emitting a luminous flux at the ends of a light guide lens. Diffuser matt.

Light source: SMD 3528 type LEDs.

Input voltage: 100-245V.

Service Life: Over 30,000 hours.

Temperature condition: from -20 °C to +45 °C.

Installation: Built into the ceiling or ceiling (using an installation accessory).

Purpose: Schools, hospitals, hotels, houses and other rooms.



Name	Item code	Wattage	Luminous flux	Color temperature	Dimensions ШхВ (мм)
LED PANEL 50W	165-03066	50 W	5000lm	6400K	295x1195



Luminaire series LED PANEL

Description: Ceiling luminaire. Ultra-thin light panel.

Technical details: The housing is made of anodized aluminum, in the end sides which mounted LEDs that emit light flux into the ends of the light guide lens. Diffuser matt.

Light source: SMD 3528 type LEDs.

Input voltage: 100-245V. Service Life: Over 30,000 hours.

Temperature condition: from -20 °C to + 45 °C.

Installation: Built into the ceiling or ceiling (using an installation accessory).

Purpose: Schools, hospitals, hotels, houses and other rooms.



Name	Item code	Wattage	Color temperature	Dimensions ШxВ (мм)
LED PANEL 48W	165-03076	48 W	4500K	600x600
LED PANEL 48W	165-03078	48 W	6400K	600x600
LED PANEL 40W	165-15068	40 W	3000K	595x595
LED PANEL 40W	165-15070	40 W	4500K	595x595
LED PANEL 40W	165-15072	40 W	6400K	595x595
LED PANEL 48W	165-15074	48 W	3000K	600x600
LED PANEL 48W	165-15076	48 W	4500K	600x600
LED PANEL 40W	165-16200	40 W	3000K	595x595



Luminaire series SLIM PANEL

Description: Ceiling luminaire. Ultra-thin light panel.

Technical details: The housing is made of anodized aluminum, in the end sides which mounted LEDs that emit light flux into the ends of the light guide lens. Diffuser matt.

Light source: SMD 3528 type LEDs.

Input voltage: 100-245V.

Service Life: Over 30,000 hours.

Temperature condition: from -20 °C to + 45 °C.

Installation: Built into the ceiling or ceiling (using an installation accessory).

Purpose: Schools, hospitals, hotels, houses and other rooms.



Name	Item code	Wattage	Color temperature	Dimensions ШxВ (мм)
LED SLIM PANEL 25W	165-15055	25 W	4500K	300x600
LED SLIM PANEL 25W	165-15050	25 W	6000K	300x600
LED SLIM PANEL 40W	165-16250	40 W	6400K	595x595



Luminaire series LED KVADRO PANEL

Description: Ceiling luminaire. Ultra-thin light panel.

Technical details: The housing is made of anodized aluminum, in the end sides which mounted LEDs that emit light flux into the ends of the light guide lens. Diffuser matt.

Light source: SMD 3528 type LEDs.

Input voltage: 100-245V.

Service Life: Over 30,000 hours.

Temperature condition: from -20 °C to + 45 °C.

Installation: Built into the ceiling (70/105/150/200 / 280x70 / 105/150/200 / 280mm) or onto the ceiling (using the mounting accessory).

Purpose: For illumination of social, household and public objects.



Name	Item code	Wattage	Luminous flux	Color temperature	Dimensions ШxВ (мм)
LED DL LED KVADRO PANEL 3W (TEKSAN)	165-15620	3 W	128lm	6000K	83x83
LED DL LED KVADRO PANEL 3W (TEKLED)	165-03620	3 W	128lm	6000K	83x83
LED SLIM KVADRO PANEL 6W (HAIGER)	165-15920	6 W	300lm	6000K	118x118
LED DL LED KVADRO PANEL 6W (TEKLED)	165-03624	6 W	300lm	6000K	118x118
LED SLIM KVADRO PANEL 12W (HAIGER)	165-15922	12 W	720lm	6000K	168x168
LED DL LED KVADRO PANEL 12W (TEKLED)	165-03628	12 W	720lm	6000K	168x168
LED SLIM KVADRO PANEL 18W (HAIGER)	165-15924	18 W	1260lm	6000K	220x220
LED DL LED KVADRO PANEL 18W (TEKLED)	165-03631	18 W	1260lm	4500K	220x220
LED DL LED KVADRO PANEL 24W (TEKLED)	165-03636	24 W	1680lm	6000K	295x295



Luminaire series LED GLASS KVADRO PANEL

Description: Ceiling luminaire. Ultra-thin light panel.

Technical details: The housing is made of anodized aluminum, in the end sides which mounted LEDs that emit light flux into the ends of the light guide lens.

Diffuser matt.

Light source: SMD 3528 type LEDs.

Input voltage: 100-245V.

Service Life: Over 30,000 hours.

Temperature condition: from -20 °C to + 45 °C.

Installation: Built into the ceiling or ceiling (using an installation accessory).

Purpose: For illumination of social, household and public objects.



Name	Item code	Wattage	Индекс цвето-передачи CRI	Color temperature	Dimensions ШxВ (мм)
LED GLASS KVADRO PANEL 12W (TEKLED)	165-03642	12 W	80	3000K	162x36
LED GLASS KVADRO PANEL 12W (TEKLED)	165-03643	12 W	80	4500K	162x36
LED GLASS KVADRO PANEL 12W (TEKSAN)	165-15644	12 W	80	6000K	162x36
LED GLASS KVADRO PANEL 12W (TEKLED)	165-03644	12 W	80	6000K	162x36
LED GLASS KVADRO PANEL 18W (TEKSAN)	165-15652	18 W	80	6000K	197x36
LED GLASS KVADRO PANEL 18W (TEKLED)	165-03652	18 W	80	6000K	197x36



Luminaire series LED SQ PANEL 30W

Description: LED recessed luminaire for suspended ceilings.

Technical details: The housing is made of anodized aluminum, in the end sides which mounted LEDs that emit light flux into the ends of the light guide lens.

Diffuser matt.

Light source: SMD 3528 type LEDs.

Input voltage: 100-245V.

Service Life: Over 30,000 hours.

Temperature condition: from -20 °C to + 45 °C.

Installation: Built into the ceiling using holders. (205x205)

Purpose: For illumination of social, household and public objects.



Name	Item code	Wattage	Luminous flux	Color temperature	Dimensions ШxВ (мм)
LED SQ PANEL 30W wight TEKLED	165-03762	30 W	2400lm	6000K	225x40
LED SQ PANEL 30W wight TEKSAN	165-15764	30 W	2400lm	3000K	225x40
LED SQ PANEL 30W wight TEKSAN	165-15766	30 W	2400lm	4500K	225x40
LED SQ PANEL 30W wight TEKSAN	165-15768	30 W	2400lm	6000K	225x40
LED SQ PANEL 30W wight TEKLED	165-03768	30 W	2400lm	6000K	225x40



Luminaire series LED SQ BACKLIT PANEL 18W

Description: LED recessed luminaire for suspended ceilings.

Technical details: The housing is made of anodized aluminum, in the end sides which mounted LEDs.

Light source: SMD 3528 type LEDs.

Input voltage: 100-245V.

Service Life: Over 30,000 hours.

Temperature condition: from -20 °C to + 45 °C.

Installation: Built into the ceiling using holders.

Purpose: Schools, hospitals, hotels, houses and other rooms.



Name	Item code	Wattage	Color temperature	Dimensions WxHxD (мм)
LED SQ BACKLIT PANEL 18W	165-15830	18 W	6000K	300x300
LED SQ BACKLIT PANEL 18W	165-15832	18 W	4000K	300x300
LED SQ BACKLIT PANEL 18W	165-15834	18 W	6000K	300x300



Luminaire series LED SQ BACKLIT PANEL

Description: LED recessed luminaire for suspended ceilings.

Technical details: The housing is made of anodized aluminum, in the end sides which mounted LEDs.

Diffuser matt.

Light source: SMD 3528 type LEDs.

Input voltage: 100-245V.

Service Life: Over 30,000 hours.

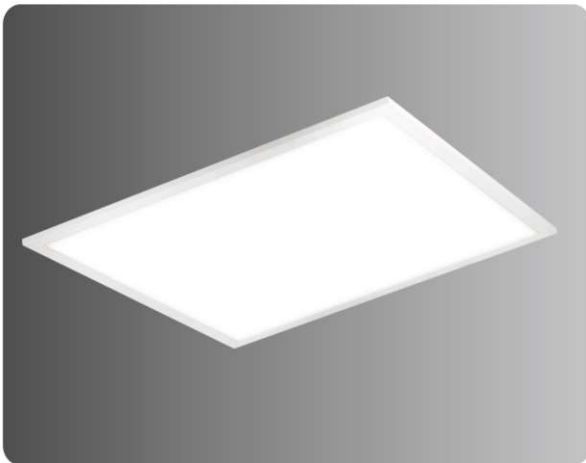
Temperature condition: from -20 ° C to + 45 ° C.

Installation: Built into the ceiling using holders.

Purpose: For lighting of social, domestic and public objects.



Name	Item code	Wattage	Color temperature	Dimensions WxHxD (mm)
LED SQ BACKLIT PANEL 25W	165-158342	25 W	4000K	300x600
LED SQ BACKLIT PANEL 25W	165-158344	25 W	6000K	300x600
LED SQ BACKLIT PANEL 36W (HAIGER)	166-15300	36Вт	6500K	595x595x30



Luminaire series LED SQ BACKLIT PANEL 45W

Description: LED recessed luminaire for suspended ceilings.

Technical details: The housing is made of anodized aluminum, in the end sides which mounted LEDs.

Light source: SMD 3528 type LEDs.

Input voltage: 100-245V.

Service Life: Over 30,000 hours.

Temperature condition: from -20 ° C to + 45 ° C.

Installation: Built into the ceiling using holders.

Purpose: For lighting of social, domestic and public objects.



Name	Item code	Wattage	Color temperature	Dimensions WxHxD (mm)
LED SQ BACKLIT PANEL 45W	165-15836	45 W	4000K	600x600
LED SQ BACKLIT PANEL 45W	165-15837	45 W	6000K	600x600
LED SQ BACKLIT PANEL 45W	165-15838	45 W	4000K	600x600
LED SQ BACKLIT PANEL 45W	165-15839	45 W	6000K	600x600



Luminaire series LED SQ BACKLIT PANEL 48W

Description: LED recessed luminaire for suspended ceilings.

Technical details: The casing is made of anodized aluminum, in the end sides of which mounted LEDs. Diffuser matt.

Light source: SMD 3528 type LEDs.

Input voltage: 100-245V.

Service Life: Over 30,000 hours.

Temperature condition: from -20 ° C to + 45 ° C.

Installation: Built into the ceiling using holders.

Purpose: For lighting of social, domestic and public objects.



Name	Item code	Wattage	Color temperature	Dimensions WxHxD (mm)
LED SQ BACKLIT PANEL 48W	165-158394	48 W	4000K	300x1200
LED SQ BACKLIT PANEL 48W	165-15840	48 W	6000K	300x1200
LED SQ BACKLIT PANEL 48W	165-15841	48 W	6000K	300x1200



Luminaire series LED SQ BACKLIT PANEL 96W

Description: LED recessed luminaire for suspended ceilings.

Technical details: The housing is made of anodized aluminum, in the end sides which mounted LEDs.

Diffuser matt.

Light source: SMD 3528 type LEDs.

Input voltage: 100-245V.

Service Life: Over 30,000 hours.

Temperature condition: from -20 ° C to + 45 ° C.

Installation: Built into the ceiling using holders.

Purpose: For lighting of social, domestic and public objects.



Name	Item code	Wattage	Color temperature	Dimensions WxHxD (mm)
LED SQ BACKLIT PANEL 96W	165-15842	96 W	6000K	600x1200
LED SQ BACKLIT PANEL 96W	165-15844	96 W	4000K	595x1195



Luminaire series LED ACRYL SLIM PANEL 48W

Description: LED recessed luminaire for suspended ceilings.

Technical details: The housing is made of anodized aluminum, in the end sides which mounted LEDs that emit light flux into the ends of the light guide lens.

The diffuser is acrylic, has greater light transmission.

Light source: SMD 3528 type LEDs.

Input voltage: 100-245V.

Service Life: Over 30,000 hours.

Temperature condition: from -20 °C to + 45 °C.

Installation: Built into the ceiling using holders.

Purpose: For illumination of social, household and public objects.



Name	Item code	Wattage	Color temperature	Dimensions WxHxD (mm)
LED ACRYL SLIM PANEL 48W	165-03048	48 W	6000K	595x595



Luminaire series LED ACRYLIC KVADRO PANEL

Description: LED recessed luminaire for suspended ceilings.

Technical details: The housing is made of anodized aluminum, in the end sides

which mounted LEDs that emit light flux into the ends of the light guide lens.

Acrylic diffuser with better light transmission

Light source: SMD 3528 type LEDs.

Input voltage: 100-245V.

Service Life: Over 30,000 hours.

Temperature condition: from -20 °C to + 45 °C.

Installation: Built into the ceiling using holders (70/105/150/200 / 280x70 / 105/150/200 / 280mm).

Purpose: For illumination of social, household and public objects.



Name	Item code	Wattage	Color temperature	Dimensions WxH (mm)
LED ACRYLIC KVADRO PANEL 3W	165-036190	3 W	4500K	83x83
LED ACRYLIC KVADRO PANEL 3W	165-036191	3 W	4000K	83x83
LED ACRYLIC KVADRO PANEL 3W	165-036200	3 W	6000K	83x83
LED ACRYLIC KVADRO PANEL 6W	165-036220	6 W	3000K	118x118
LED ACRYLIC KVADRO PANEL 6W	165-036230	6 W	4000K	118x118
LED ACRYLIC KVADRO PANEL 6W	165-036240	6 W	6000K	118x118
LED ACRYLIC KVADRO PANEL 12W	165-036260	12 W	3000K	168x168
LED ACRYLIC KVADRO PANEL 12W	165-036262	12 W	4000K	168x168
LED ACRYLIC KVADRO PANEL 12W	165-036270	12 W	4000K	168x168
LED ACRYLIC KVADRO PANEL 12W	165-036280	12 W	6000K	168x168
LED ACRYLIC KVADRO PANEL 18W	165-036300	18 W	3000K	220x220
LED ACRYLIC KVADRO PANEL 18W	165-036302	18 W	4000K	220x220
LED ACRYLIC KVADRO PANEL 18W	165-036320	18 W	6000K	220x220
LED ACRYLIC KVADRO PANEL 24W	165-036340	24 W	3000K	295x295
LED ACRYLIC KVADRO PANEL 24W	165-036342	24 W	4000K	295x295
LED ACRYLIC KVADRO PANEL 24W	165-036360	24 W	6000K	295x295



Luminaire series LED ROUND PANEL 30W wight TEKSAN

Description: LED recessed luminaire for suspended ceilings.

Technical details: The housing is made of anodized aluminum, in the end sides which mounted LEDs that emit light flux into the ends of the light guide lens.

Diffuser matt.

Light source: SMD 3528 type LEDs.

Input voltage: 100-245V.

Service Life: Over 30,000 hours.

Temperature condition: from -20 °C to + 45 °C.

Installation: Built into the ceiling using holders. (205x205)

Purpose: For illumination of social, household and public objects.



Name	Item code	Wattage	Luminous flux	Color temperature	Dimensions WxH (mm)
LED ROUND PANEL 30W wight TEKSAN	165-03758	30 W	2400lm	3000K	225x40
LED ROUND PANEL 30W wight TEKSAN	165-15760	30 W	2400lm	4000K	225x40
LED ROUND PANEL 30W wight TEKSAN	165-157600	30 W	2400lm	4500K	225x40
LED ROUND PANEL 30W wight TEKSAN	165-15762	30 W	2400lm	6000K	225x40



Luminaire series LED ROUND PANEL

Description: Ceiling luminaire. Ultra-thin light panel.

Technical details: The housing is made of anodized aluminum, in the end sides which mounted LEDs that emit light flux into the ends of the light guide lens. Diffuser matt.

Light source: SMD 3528 type LEDs.

Input voltage: 100-245V.

Service Life: Over 30,000 hours.

Temperature condition: from -20 °C to + 45 °C.

B Built in to the ceiling or to the ceiling (using the mounting accessory) d70 / 105/150/200 / 280mm.

Purpose: For illumination of social, household and public objects.



Name	Item code	Wattage	Luminous flux	Color temperature	Dimensions ШxВ (мм)
LED SLIM ROUND PANEL 3W (MERTSAN)	165-16212	3 W	120lm	6000K	D 83
LED SLIM ROUND PANEL 6W (MERTSAN)	165-16220	6 W	300lm	6000K	D 118
LED SLIM ROUND PANEL 6W (MERTSAN)	165-162202	6 W	300lm	6000K	D 118
LED SLIM ROUND PANEL 12W (MERTSAN)	165-16228	12 W	720lm	6000K	D 168
LED SLIM ROUND PANEL 12W (MERTSAN)	165-162280	12 W	720lm	6000K	D 168
LED SLIM ROUND PANEL 18W (MERTSAN)	165-16236	18 W	1260lm	6000K	D 220
LED SLIM ROUND PANEL 3W (HAIGER)	165-15910	3 W	120lm	6000K	D 83
LED DL LED ROUND PANEL 3W (TEKSAN)	165-15602	3 W	120lm	6000K	D 83
LED DL LED ROUND PANEL 3W (TEKLED)	165-03602	3 W	120lm	6000K	D 83
LED SLIM ROUND PANEL 6W (HAIGER)	165-15912	6 W	300lm	6000K	D 118
LED DL LED ROUND PANEL 6W (TEKSAN)	165-15606	6 W	300lm	6000K	D 118
LED DL LED ROUND PANEL 6W (TEKLED)	165-03606	6 W	300lm	6000K	D 118
LED SLIM ROUND PANEL 12W (HAIGER)	165-15914	12 W	720lm	6000K	D 168
LED DL LED ROUND PANEL 12W (TEKSAN)	165-15610	12 W	720lm	6000K	D 168
LED DL LED ROUND PANEL 12W (TEKLED)	165-03610	12 W	720lm	6000K	D 168
LED SLIM ROUND PANEL 18W (HAIGER)	165-15916	18 W	1260lm	6000K	D 220
LED DL LED ROUND PANEL 18W (TEKSAN)	165-15614	18 W	1260lm	6000K	D 220
LED DL LED ROUND PANEL 18W (TEKLED)	165-036150	18 W	1260lm	3000-6000K	D 220
LED DL LED ROUND PANEL 24W (TEKLED)	165-15618	24 W	1680m	6000K	D 295
LED DL LED ROUND PANEL 24W (TEKLED)	165-03618	24 W	1680m	6000K	D 295
LED DL LED ROUND PANEL 6W (MERTSAN)	165-16221	6 W	300lm	6000K	D 118
LED DL ROUND PANEL 18W SENSOR (MS)	165-162494	18 W	1260lm	6000K	D 220



Luminaire series LED GLASS ROUND/KVADRO PANEL

Description: Ceiling luminaire. Ultra-thin light panel.

Technical details: The housing is made of anodized aluminum, in the end sides which mounted LEDs that emit light flux into the ends of the light guide lens. Diffuser matt.

Light source: SMD 3528 type LEDs.

Input voltage: 100-245V.

Service Life: Over 30,000 hours.

Temperature condition: from -20 °C to + 45 °C.

Installation: Built into the ceiling or ceiling (using an installation accessory).

Purpose: For illumination of social, household and public objects.



Name	Item code	Wattage	Индекс цвето-передачи CRI	Color temperature	Dimensions ШxВ (мм)
LED GLASS ROUND PANEL 12W (TEKLED)	165-03638	12 W	80	3000K	162x36
LED GLASS ROUND PANEL 12W (TEKLED)	165-03639	12 W	80	4500K	162x36
LED GLASS ROUND PANEL 12W (TEKSAN)	165-15640	12 W	80	6000K	162x36
LED GLASS ROUND PANEL 12W (TEKLED)	165-03640	12 W	80	6000K	162x36
LED GLASS ROUND PANEL 18W (TEKSAN)	165-15647	18 W	80	4500K	197x36
LED GLASS ROUND PANEL 18W (TEKSAN)	165-15648	18 W	80	6000K	197x36
LED GLASS ROUND PANEL 18W (TEKLED)	165-03648	18 W	80	6000K	197x36
LED GLASS KVADRO PANEL 18W (TEKSAN)	165-15651	18 W	80	4000K	197x197x36



luminaire LED PANEL LUNA

Description: LED lamp for false ceilings.

Technical details: The housing is made of anodized aluminum, in the end sides which is mounted

LEDs emitting a luminous flux at the ends of a light guide lens.

Diffuser matt. Light source: SMD 3528 type LEDs.

Input voltage 85-265V.

Service Life: More than 50,000 hours.

Temperature condition from -20 °C to + 45 °C.

Installation: On the ceiling, inside the ceiling.

Purpose: Schools, hospitals, hotels, residential buildings and others rooms with increased requirements for energy consumption and lighting quality.



Name	Item code	Wattage	Color temperature	Dimensions ДхГ (мм)
LED PANEL LUNA 48W	165-15060	48 W	6000K	600x30



Luminaire series ACRYLIC ROUND LED PANEL

Description: LED recessed luminaire for suspended ceilings.

Technical details: The housing is made of anodized aluminum, in the end sides which mounted LEDs that emit light flux into the ends of the light guide lens.

Acrylic diffuser with better light transmission

Light source: SMD 3528 type LEDs.

Input voltage: 100-245V.

Service Life: Over 30,000 hours.

Temperature condition: from -20 °C to + 45 °C.

Installation: Built into the ceiling using holders (d70 / 105/150/200 / 280mm).

Purpose: For illumination of social, household and public objects.



Name	Item code	Wattage	Color temperature	Dimensions WxHxD
LED ACRYLIC ROUND PANEL 3W	165-036010	3 W	4000K	D 83
LED ACRYLIC ROUND PANEL 3W	165-036020	3 W	6000K	D 83
LED ACRYLIC ROUND PANEL 6W	165-036040	6 W	3000K	D 118
LED ACRYLIC ROUND PANEL 6W	165-036050	6 W	4000K	D 118
LED ACRYLIC ROUND PANEL 6W	165-036060	6 W	6000K	D 118
LED ACRYLIC ROUND PANEL 12W	165-036080	12 W	3000K	D 168
LED ACRYLIC ROUND PANEL 12W	165-036100	12 W	6000K	D 168
LED ACRYLIC ROUND PANEL 18W	165-036120	18 W	3000K	D 220
LED ACRYLIC ROUND PANEL 18W	165-036130	18 W	4000K	D 220
LED ACRYLIC ROUND PANEL 18W	165-036140	18 W	6000K	D 220
LED ACRYLIC ROUND PANEL 24W	165-036160	24 W	3000K	D 295
LED ACRYLIC ROUND PANEL 24W	165-036170	24 W	4000K	D 295
LED ACRYLIC ROUND PANEL 24W	165-036172	24 W	6000K	D 295

Luminaire series AERO ROUND LED PANEL

Description: LED recessed luminaire for suspended ceilings.

Technical details: The housing is made of anodized aluminum, in the end sides which mounted LEDs that emit light flux into the ends of the light guide lens. Diffuser matt.

Light source: SMD 3528 type LEDs.

Input voltage: 100-245V.

Service Life: Over 30,000 hours.

Temperature condition: from -20 °C to + 45 °C.

Installation: Built into the ceiling using holders.

Purpose: For lighting of social, domestic and public objects.



Name	Item code	Wattage	Color temperature	Luminous Flux	Dimensions WxHxD
AERO ROUND LED PANEL 6W	165-03344	6 W	4000K	300lm	D 115
AERO ROUND LED PANEL 6W	165-03345	6 W	6000K	300lm	D 115
AERO ROUND LED PANEL 12W	165-033452	12 W	4000K	720lm	D 165
AERO ROUND LED PANEL 12W	165-033453	12 W	6000K	720lm	D 165
ROUND LED PANEL (HIGER) 12W	165-15950	12 W	6000K	720lm	D 165
ROUND LED PANEL (TEKLED) 18W	165-03952	12 W	6000K	720lm	D 165
AERO ROUND LED PANEL 18W	165-033454	18 W	4000K	1260lm	D 215
AERO ROUND LED PANEL 18W	165-033455	18 W	6000K	1260lm	D 215
AERO ROUND LED PANEL 18W SENSOR	165-153492	18 W	6000K	1260lm	D 215
AERO ROUND LED PANEL 24W	165-033456	24 W	6000K	1680lm	D 295
ROUND LED PANEL (HIGER) 24W	165-03954	18 W	6000K	1260lm	D 215
AERO ACRYLIC ROUND LED PANEL 18W	165-0334550	18 W	6000K	1260lm	D 215
AERO ACRYLIC SQUARE LED PANEL 6W	165-033480	6 W	4000K	300lm	115x115
AERO ACRYLIC SQUARE LED PANEL 12W	165-033482	12 W	4000K	720lm	165x165
AERO ACRYLIC SQUARE LED PANEL 12W	165-033483	12 W	6000K	720lm	165x165
KVADRO LED PANEL (HIGER) 18W	165-03962	12 W	6000K	720lm	165x165
AERO ACRYLIC SQUARE LED PANEL 18W	165-033484	18 W	4000K	1260lm	215x215
AERO ACRYLIC SQUARE LED PANEL 18W	165-033485	18 W	6000K	1260lm	215x215
AERO SQUARE LED PANEL 24W	165-033486	24 W	6000K	1680lm	295x295
KVADRO LED PANEL (HIGER) 24W	165-15964	24 W	6000K	1680lm	295x295
PL LED ROUND PANEL 6W S/U	165-03949	6 W	4000K	300lm	D 115
PL LED ROUND PANEL 12W S/U	165-03951	12 W	4000K	720lm	D 165
PL LED ROUND PANEL 18W S/U	165-03953	18 W	4000K	1260lm	D 215
PL LED ROUND PANEL 24W S/U	165-03956	24 W	6000K	1680lm	D 295
PL LED KVADRO PANEL 6W S/U	165-03959	6 W	4000K	300lm	115x115
PL LED KVADRO PANEL 6W S/U	165-03960	6 W	6000K	300lm	115x115
PL LED KVADRO PANEL 12W S/U	165-03961	12 W	4000K	720lm	165x165
PL LED KVADRO PANEL 18W S/U	165-03963	18 W	4000K	1260lm	215x215
PL LED KVADRO PANEL 6W S/U	165-03966	24 W	6000K	1680lm	295x295

